

324452 ✓ ACTIVE

AMPOWER

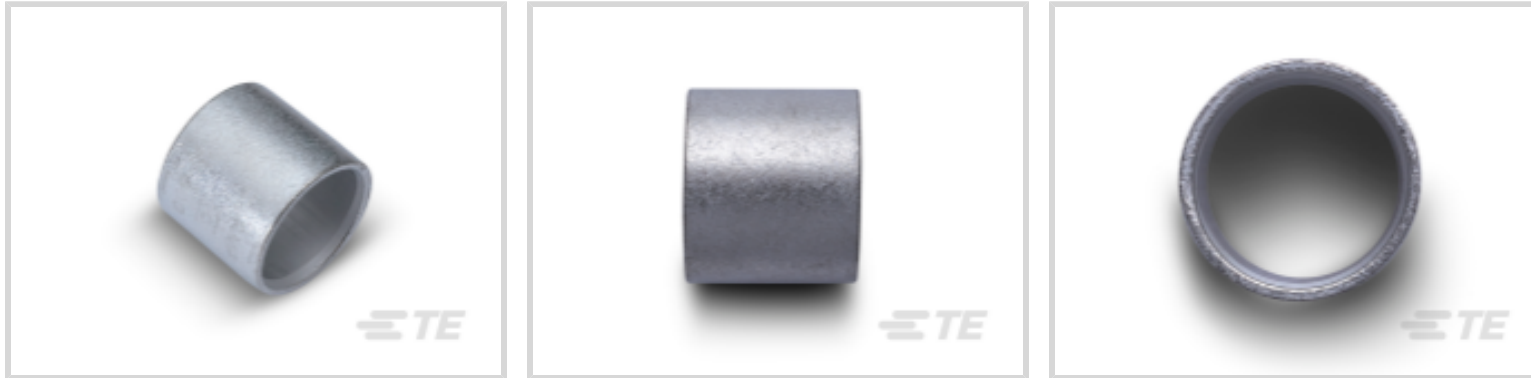
TE Internal #: 324452

Splices, 600 kcmil Wire Size, 550000 – 650000 CMA Wire Size, Copper, Gray, Parallel Splice Splice, Length 30.73 mm [1.21 in], Box, Closed, AMPOWER

[View on TE.com >](#)



Terminals & Splices > Splices > AMPOWER Parallel Splice



Sealable: No

Wire Size: 550000 – 650000 CMA

Primary Product Material: Copper

Primary Product Color: Gray

[All AMPOWER Parallel Splice \(15\)](#)

### Features

#### Product Type Features

Discrete Wire Type	Stranded
Barrel Style	Standard
Splice Accessory Type	Splice
Sealable	No
Splice Type	Parallel Splice
Serrated	No
Compatible With Discrete Wire Type	Stranded

#### Configuration Features

Splice Configuration	Single to Multiple
Compatible With Wire & Cable Type	Discrete Wire

#### Body Features

Plating Material	Tin
Weight per Piece	74.76 g
Primary Product Material	Copper
Primary Product Color	Gray

#### Contact Features

--	--



Contact Plating Material	Tin
	150 µin

Barrel Type	Closed
-------------	--------

### Termination Features

Termination Method	Crimp
--------------------	-------

### Mechanical Attachment

Wire Insulation Support	Without
-------------------------	---------

### Dimensions

Barrel Inside Diameter (Min)	27.56 mm[1.085 in]
------------------------------	--------------------

Wire Size	550000 – 650000 CMA
-----------	---------------------

Overall Product Length	30.73 mm[1.21 in]
------------------------	-------------------

### Usage Conditions

Insulation Option	Uninsulated
-------------------	-------------

### Operation/Application

Compatible With Wire Base Material	Copper
------------------------------------	--------

### Industry Standards

Agency/Standard	UL
-----------------	----

Agency/Standard Number	E13288
------------------------	--------

### Packaging Features

Packaging Quantity	25
--------------------	----

Packaging Method	Box
------------------	-----

### Other

Comment	Tin Plate per ASTM B-545, Two Crimps necessary.
---------	---

### Product Compliance

[For compliance documentation, visit the product page on TE.com>](#)

EU RoHS Directive 2011/65/EU	Compliant
------------------------------	-----------

EU ELV Directive 2000/53/EC	Compliant
-----------------------------	-----------

China RoHS 2 Directive MIIT Order No 32, 2016	No Restricted Materials Above Threshold
---	---

EU REACH Regulation (EC) No. 1907/2006	Current ECHA Candidate List: JUNE 2022 (224)
--	--



Candidate List Declared Against: JUNE 2022 (224)

Does not contain REACH SVHC

Halogen Content

Low Halogen - Br, Cl, F, I < 900 ppm per homogenous material. Also BFR/CFR/PVC Free

Solder Process Capability

Not applicable for solder process capability

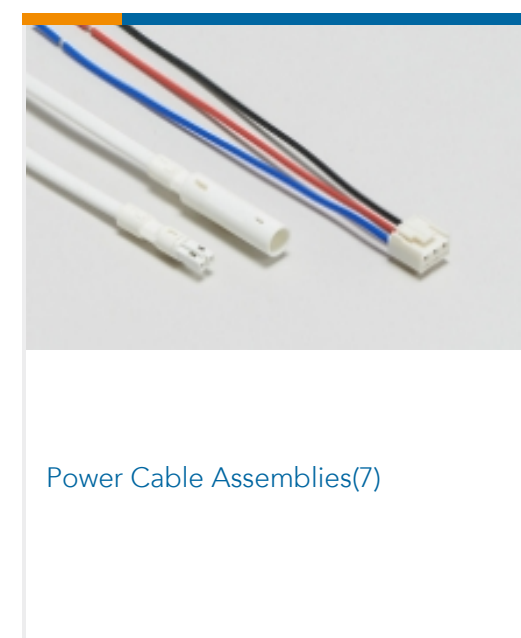
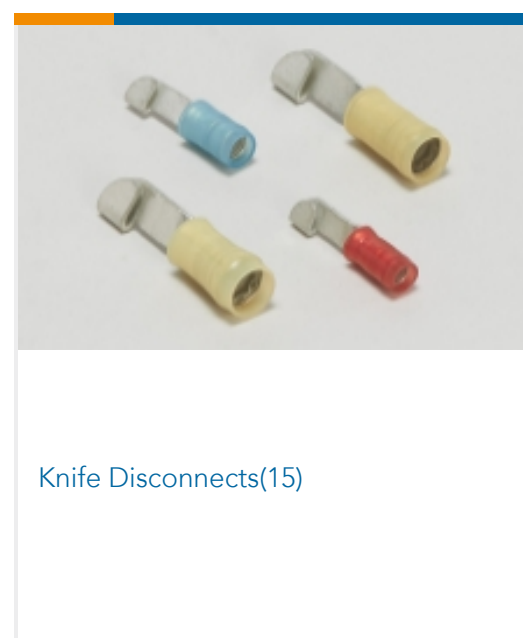
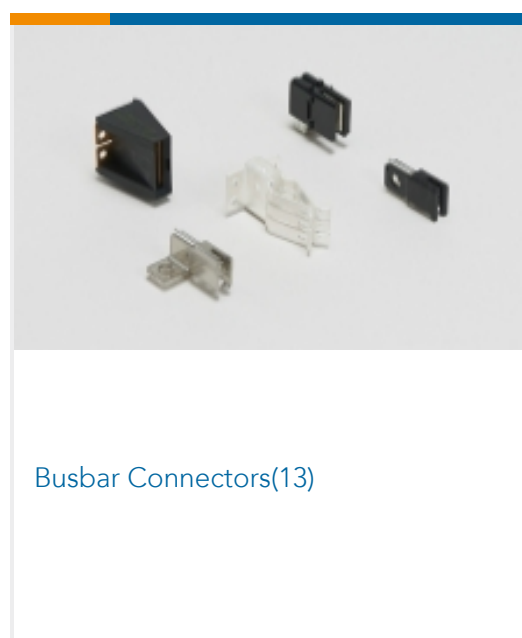
Product Compliance Disclaimer

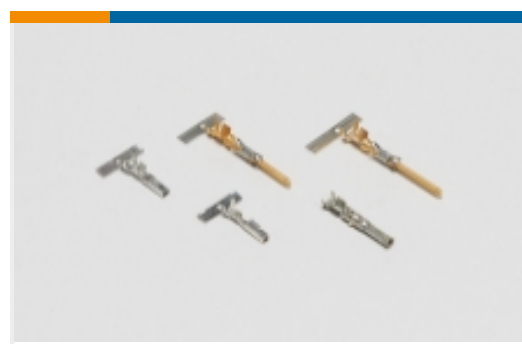
This information is provided based on reasonable inquiry of our suppliers and represents our current actual knowledge based on the information they provided. This information is subject to change. The part numbers that TE has identified as EU RoHS compliant have a maximum concentration of 0.1% by weight in homogenous materials for lead, hexavalent chromium, mercury, PBB, PBDE, DBP, BBP, DEHP, DIBP, and 0.01% for cadmium, or qualify for an exemption to these limits as defined in the Annexes of Directive 2011/65/EU (RoHS2). Finished electrical and electronic equipment products will be CE marked as required by Directive 2011/65/EU. Components may not be CE marked. Additionally, the part numbers that TE has identified as EU ELV compliant have a maximum concentration of 0.1% by weight in homogenous materials for lead, hexavalent chromium, and mercury, and 0.01% for cadmium, or qualify for an exemption to these limits as defined in the Annexes of Directive 2000/53/EC (ELV). Regarding the REACH Regulation, the information TE provides on SVHC in articles for this part number is based on the latest European Chemicals Agency (ECHA) 'Guidance on requirements for substances in articles' posted at this URL: <https://echa.europa.eu/guidance-documents/guidance-on-reach>

### Compatible Parts



### Also in the Series | AMPOWER





Power Contacts(1)



Quick Disconnects(1)



Rectangular Power Connectors(6)



Ring Terminals &amp; Spade Terminals(141)



Splices(40)

## Documents

### Product Drawings

[SPLICE,AMPOWER PARA 600MCM](#)

English

### CAD Files

[3D PDF](#)

3D

Customer View Model

[ENG\\_CVM\\_CVM\\_324452\\_L.2d\\_dxf.zip](#)

English

Customer View Model

[ENG\\_CVM\\_CVM\\_324452\\_L.3d\\_igs.zip](#)

English

Customer View Model

[ENG\\_CVM\\_CVM\\_324452\\_L.3d\\_stp.zip](#)

English

By downloading the CAD file I accept and agree to the [Terms and Conditions](#) of use.

### Datasheets & Catalog Pages

[AMPOWER Terminals and Splices Flyer](#)

English

### Agency Approvals

[UL Report](#)

English